



UNIVERSITY LIBRARIES GUIDE



CHEVREUL LIBRARY

Berges du Rhône Campus



BRON TEMPORARY LIBRARY

Porte des Alpes Campus

TABLE OF CONTENTS

THE ESSENTIAL



THE UNIVERSITY LIBRARIES

(PAGE 3)



BORROWING DOCUMENTS

(PAGE 7)



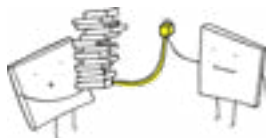
THE LIBRARY ACCOUNT

(PAGE 8)



THE COLLECTIONS

(PAGE 4)



ONLINE LIBRARY

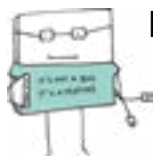
(PAGE 5 ET 6)

SERVICES



WIFI & COMPUTER ACCESS

(PAGE 9)



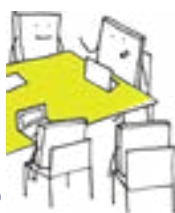
PRINT, SCAN, DIGITIZE

(PAGE 10)



ONLINE LIBRARIANS

(PAGE 12)



STUDY ROOM BOOKING

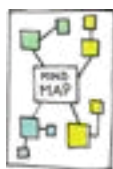
(PAGE 11)



SMALL EQUIPMENT LENDING

(PAGE 12)

FOR GOING FURTHER



TRAINING & WORKSHOPS

(PAGE 13)



RESEARCH SUPPORT

(PAGE 14)




CULTURAL EVENTS

(PAGE 15)

THE UNIVERSITY LIBRARIES

CHEVREUL LIBRARY (BU CHEVREUL)

How to get there : Berges du Rhône Campus
10, rue Chevreul (Lyon 7ème)

 T1, Claude Bernard stop
T2, Centre Berthelot stop

Call us : +33 (0)4 78 69 77 32



REGISTER

- **Lyon 2 students are automatically enrolled** in our libraries thanks to their Izly card.
 - **Other users** must register at the library reception desk to get their card.
- You need your card to borrow documents.**


THEFT OR LOSS OF YOUR CARD

Any theft or loss of the card must be reported as soon as possible to the library reception desk.

The university libraries are open to University Lyon 2 community, all members of other universities and anyone looking for documentation.

BRON LIBRARY (BUP)

How to get there : Porte des Alpes Campus
Building S. 5, avenue Pierre-Mendès France (Bron)

 T2, Europe-Université stop

Call us : +33 (0)4 78 77 44 56



THE COLLECTIONS



ON THE SHELVES : » <https://catalogue.univ-lyon2.fr>

BRON LIBRARY

● Reading room

- Anthropology
- Performing Arts
- Psychology
- Political Science
- Sociology
- Tourism
- Economic and Social Administration
- Geography
- History
- Information-communication
- Language Studies (English, Spanish, Portuguese, Applied Foreign Languages (LEA), French for foreigners (FLE))
- Modern Literature
- Language Sciences



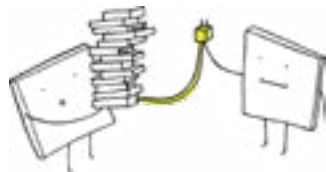
CHEVREUL LIBRARY

- 0 **Ground floor**
Methodology, Press, Graphic novels
- 1 **First floor**
Law
- 2 **Second floor**
Economics, Management
- 3 **Third floor**
Education,
French for foreigners (FLE),
Classical Literature,
Modern Literature, Musicology
- 4 **Fourth floor**
English, Arabic, Applied Foreign Languages (LEA).
- 5 **Fifth floor**
Archeology, Art history

ONLINE LIBRARY

» <https://bu.univ-lyon2.fr/bibelec>

@ docelec.bu@univ-lyon2.fr



GOING TO E-RESOURCES

Several tools allow accessing easily to online documentation.

➔ To search in the online library :

Exploradoc

➔ List of resources in alphabetical order :

» bu.univ-lyon2.fr > **Bibliothèques** > **Bibliothèque électronique**

➔ Pages by academic discipline on our website :

» bu.univ-lyon2.fr > **Disciplines**



HERE'S A SELECTION OF OUR SPECIALIZED RESOURCES

PERFORMING ARTS Tènk, Theatre in video, Film Scripts Online, Les Yeux Doc...

LAW/ADMINISTRATION Dalloz, Le Doctrinal, Lamyline, Lexis, Lextenso, UNJF...

ECONOMICS/MANAGEMENT ABI Inform, Business Source, Cap Financials...

ART HISTORY Art Full Text, Benezit, Vogue USA / Italia, Harper's Bazaar...

LANGUAGES AND FOREIGN CULTURES My Cow, Oxford Dictionnaire, Sketch Engine...

MUSICOLOGY Naxos, Grove Music, Music Online, la Philharmonie de Paris...

PSYCHOLOGY Counseling therapy in video, Nature neuroscience, PsycArticles...

SOCIAL SCIENCES LGBT Magazine, Revolution & Protest Online, Statista...

BORROWING DOCUMENTS



LOAN RULES

University of Lyon	«Licence»	20 doc. per library	4 weeks
	Master		
	PhD	20 doc. per library	8 weeks
	Teachers and Staff		
University Lumière Lyon 2	Apprenticeship		
Every people with a disability		20 doc. per library	8 weeks
Other users		20 doc. per library	4 weeks
Renewal : 2 weeks for everybody			

- ➔ Daily newspapers and most of the magazines are excluded from the loan. At the Chevreul library's ground floor, some magazines can be borrowed.
- ➔ Loans and returns can be made at the automatic lending machines. Returns have to be made at the same library where you borrow the books.
- ➔ Bring a document from a Lyon 2 library to the other with **Doc express**. (only for the people with a disability and Lyon 2 staff).
Form » bu.univ-lyon2.fr > Services > Navette Doc Express

SOME DELAY ?

If you're bringing back your documents with a delay, you will no longer be able to borrow or benefit from some services. 1 day of delay = 1 day of suspension.

» To contact the litigation department

Email : contentieux.bu@listes.univ-lyon2.fr

Phone : 06 21 12 27 07 (between 9 am to 5 pm)

INTERLIBRARY LOAN

 Request a document unavailable in Lyon libraries with our Interlibrary Loan Service «**Prêt Entre Bibliothèques**».

Form » bu.univ-lyon2.fr > Services > Prêt Entre Bibliothèques

LIBRARY ACCOUNT



» On the catalog : <https://catalogue.univ-lyon2.fr>

You can :

Consult your library account

- Click top right of the screen on «Pour réserver ou prolonger des documents, connectez-vous à votre compte BU».
- Lyon 2 student's ▶ click on the link and enter your Lyon 2 ID.
- Other users :
 - ▶ The ID = barcode numbers of your library card.
 - ▶ The password by default (think to change it !) = your last name in capital letters.

Extend your loans

- If a loan is renewable, a link «Renouveler» appears aside.
- Click on «Tout renouveler» for extending all the outstanding loans.
- The extension is validated when the new date is displayed.
- Terms :
 - only one extension per document ;
 - renewal of the loan for two weeks ;
 - to be carried out **before** the scheduled return date ;
 - some documents are not renewable «Prêt 14 jours» and «Prêt concours».

Book documents already on loan

- Do your search.
- Starting from the detailed page of the document, click on «Réserver» in the box on the right.
- You are going to receive an email as soon as the document is available. You will have 7 days to come and collect it from the library where it's located.

The library account allows as well to :

- view your loan history,
- suggest purchases,
- create private or public document lists.

WIFI & COMPUTER ACCESS

WIFI

Eduoram network

International wifi academic network.

A full secured wireless access to the web. Choose it when you connect to the University Lumière Lyon 2 and to other universities.

Before using, you have to configure it. Print tutorials are available at the welcome desks. The staff of the digital services counters (GSN) can also give you help for the configuration.

Eduspot network

French wifi academic network (Renater Federation).

The browser launches automatically by the tab *Eduspot connexion*. Choose the proper institution within the list.

Invite-Lyon 2 network

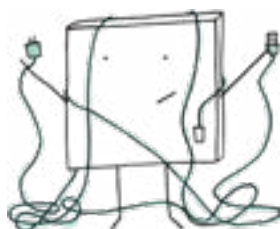
It allows the external users to connect to the university wifi network. Use temporary ID available for 12 hours, you will get them by email or text messages.



Library computers

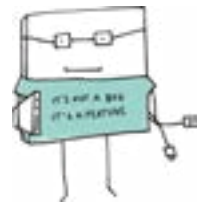
Connection with your Lyon 2 ID **only**.

External users or students from other universities can't use these computers.



PRINT, SCAN, DIGITIZE

» bu.univ-lyon2.fr > Services > Imprimer, numériser, photocopier



Practical informations

- Printing, scanning and photocopying are restricted to members of the University Lyon 2.
- Each floor of the Chevreul library has a black and white printer to the user's dispose. The last floor's printer permits also color printing.
- Each student has a free credit of 50 copies by year, rechargeable by credit card.
- Printing prices : 5 cents for black and white, 10 cents for colors printings.
- Printing places : Chevreul library, computers rooms on the Porte des Alpes and Berges du Rhône campus. It's not possible to print at Bron library.

Print, scan, digitize

- Put your Izly card in front of the copy machine, or enter your Lyon 2 ID.
- The printing must be launched from a library computer. If your documents are recorded on a USB key, think to copy it on the computer before printing it.
- The account which unlocks printing is the one connected to the computer.
- Your scans are sent to your Lyon 2 email.

Refill your account

- Connect you to your user interface PaperCut :
- » <https://impression.univ-lyon2.fr/user>
- Click on the tab *Rechargement Paybox*.
- Choose the amount that you want to add on your account, then click on *Suivant*. Confirm by clicking on *Payer*.
- Fulfill the informations of your credit card, and click on *Valider*.

STUDY ROOM BOOKING

AT CHEVREUL LIBRARY



➔ For all the members of the **University of Lyon (COMUE)**

1) Book on Affluences

- on the app Affluences, or on the website below
» <https://affluences.com/bu-chevreul/reservation>
- enter your **university email**

2) Confirm the booking

You have **2 hours** to confirm your reservation. Click on the link in the email received.

- ➔ *From the app, the confirmation is automatic if you have informed your email after your first reservation.*
- ➔ *On a computer : it's possible to record the email adress in the browser to confirm automatically.*

3) Validate the reservation

Upon your arrival at the library, scan the QR Code on the door of the study room you reserved, or go to the welcome desk.

In case of delay of more than 15 minutes, the reservation will be canceled.

➔ For the **external people**

The rooms are available for registered users only.

The reservation is made at the welcome desk.

In the study rooms and all the reading rooms :



Food and cups are forbidden.



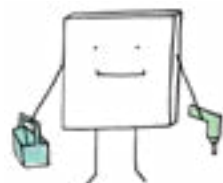
Containers with caps are allowed.



SMALL EQUIPMENT LENDING

SMALL EQUIPMENT

→ for on-site use



At Chevreul library : headphones, noise-cancelling headphones, CD-DVD players, keyboards, mice, calculators, micro-USB phone chargers, markers for whiteboards, anti-stress kits.

At Bron library : CD-DVD players, headphones, calculators, mice, micro-USB phone chargers.

ONLINE LIBRARIANS (BEL)

A QUESTION ? ONLINE LIBRARIANS ANSWER YOU



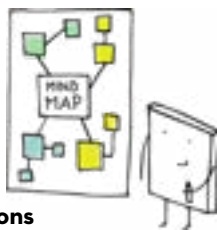
A team of librarians is at your disposal for answering, within 72 h maximum, to the practical questions you ask yourself on libraries, or for helping you with your documentation seeking.

You can also consult the FAQ, searching by topics or looking for recent questions.

» bu.univ-lyon2.fr > Tab **Une question ?**

TRAINING & WORKSHOPS

- to **save time** in your work
- to discover **new resources**



Find all the informations on our website : » bu.univ-lyon2.fr > Formations

WHAT WE OFFER

«Licence» and Master

» bu.univ-lyon2.fr > Formations > Pour la licence et le master

Online training : Méthodoc, Décodoc and Citadoc are three courses to discover, at your own pace, how to improve your search of information.



To begin or resume the basics of information search, to get the most out of the web, to cite correctly your sources.



Décodoc gives the keys to using photos and videos correctly, deciphering the information and spotting misinformation.



A formation for Zotero to your pace : installation of the software, collection of references, and creation of a standards-compliant bibliography in a few clicks.



PhD

Isidoc't : documentary research, training and handling of scientific information, - a complete thesis-specific module.

» bu.univ-lyon2.fr/doctorat

All public

Atelier Doc : 2 hours on various themes throughout the year (calendar online).

AccroDoc : self-study site to learn at your own pace according to your needs. 2 to 5 minutes videos.

» bu.univ-lyon2.fr > Formations > accrodoc



RESEARCH SUPPORT

» bu.univ-lyon2.fr > Soutien à la recherche

Personalized support :

→ *on appointment*



@ Contact

For any request : bu-soutienrecherche@univ-lyon2.fr

To submit your thesis and for questions : thelec@univ-lyon2.fr

To submit your dissertation and for questions : memelec@univ-lyon2.fr

To contact Prairial team : contact@publications-prairial.fr

CULTURAL EVENTS



PARTICIPATE IN VARIOUS ACTIVITIES

Throughout the year, the libraries offer cultural and scientific activities : exhibitions, meetings, conferences, round tables, workshops, presentations of students work, escape games, screenings, quizzes, readings...

The program is available online » bu.univ-lyon2.fr > Culture



November 2023

Meeting with an author from the Bron Book Festival's Prize
Prix Summer



February 2024

Exhibition on Fake news



March 2024

Screening of a documentary
«Les Yeux Doc»



May 2024

Quiz on European women authors

Reserved services :

Some services are restricted to the Lyon 2 community, get more informations at a library welcome desk.



OBTAIN INFORMATIONS

- in the libraries, with the staff onsite.
- online, by asking your questions to the Online Librarians (BEL).



Any question?
Online librarians
will answer your queries.



TIMETABLES AVAILABLE ONLINE

» <https://bu.univ-lyon2.fr/calendrier-horaires>

View the library timetables and occupancy rates with the app.



ACCESS SUITABLE SERVICES TO PEOPLE WITH DISABILITIES

More informations online and in the specific guide.

» <https://bu.univ-lyon2.fr/handicap>



Follow us on social media



bulyon2



BULyon2