

— université
— lumière
— LYON 2

INTERNATIONAL STUDENT HANDBOOK 2020-2021

La Région

Auvergne-Rhône-Alpes



Erasmus+



CONTACTS

INTERNATIONAL OFFICE - GLOBAL MOBILITY TEAM

Berges du Rhône Campus - Bélénos Building 1st floor

18, Quai Claude Bernard - 69007 Lyon

Open each week on Monday, Tuesday and Thursday from 9am to 12pm, and from 2pm to 5pm

- **Erasmus + exchange students:**
incoming-europe@univ-lyon2.fr +33 (0)4 78 69 74 18, room B140
 - **Erasmus + International Credit Mobility students:**
mic@listes.univ-lyon2.fr +33 (0)4 78 69 71 68, room B142
 - **Non Erasmus + exchange students (Non European students):**
incoming-monde@univ-lyon2.fr +33 (0)4 78 69 70 42, room B140
 - **International collaborative and joint degree students:**
dpi@univ-lyon2.fr +33 (0)4 78 69 72 66, room B142
-

INTERNATIONAL STUDENT OFFICE

Maison de l'Étudiant.e - room U107 - Porte des Alpes Campus

5 avenue Pierre Mendès-France 69500 Bron

Open from Monday to Friday from 9am to 5pm.

- **Direct-enrolment students (residence permit, right to work, etc.):**
international-hors-echange@univ-lyon2.fr +33 (0)4 78 77 30 02
 - **Cultural activities and social integration:** alter-ego@univ-lyon2.fr +33 (0)4 78 77 24 84
 - **Accommodation:** logement-dri@univ-lyon2.fr +33 (0)4 78 69 71 82
-

INTERNATIONAL CENTRE OF FRENCH STUDIES (CIEF)

Berges du Rhône Campus

16, Quai Claude Bernard 69365 Lyon cedex 07

Email: cief@univ-lyon2.fr

Phone: +33 (0)4 78 69 71 36

RESEARCH DEPARTMENT - INTERNATIONAL SERVICES

Berges du Rhône Campus - Gaia Building

86, rue Pasteur 69365 Lyon cedex 07

- **International PhD students:** ri.recherche@univ-lyon2.fr +33 (0)4 78 69 73 71, room G107

WELCOME TO UNIVERSITÉ LUMIÈRE LYON 2!

Dear students,

You have made a great choice!

We are delighted to have you as one of our students for a semester or a full academic year. Having many students of diverse nationalities and native languages on our campuses and in our classes is a source of pride for our university.

With almost 28,000 students, about 17% of whom are international students, we hope that you will soon feel at home at our university.

You will discover the variety of courses that we offer, from Anthropology to Tourism, Linguistics, Law and Musicology, to name just a few.

We have devised this handbook to help you settle in. It contains all the information you need to quickly transition to university life in Lyon: how to open a bank account, how to rent a bicycle, how to find the courses that interest you, how to access the libraries and other useful resources.

However, a handbook is no substitute for real people to help you. You will have the opportunity to attend activities and outings organized by the International student office, we will organize get-togethers with French students, and will always be here for you to ensure that you have fond memories of Lyon 2.

Work hard, play hard, and take advantage of everything that Lyon 2 has to offer. Have a great semester or academic year with us.

Jim Walker
Vice-President in charge of
International Relations

This handbook is intended to help you during your university experience in Lyon as an international student.

In the first section, you will find all the necessary information to help prepare for your arrival and stay in France.

The second section will help you adjust to different aspects of university life such as finding your way around the campus, courses and validation, and the various tools at your disposal.

Finally, the last section is intended to guide you through different aspects of your daily life in France such as travel, health and other useful services.

The Global Mobility team from the International student Office hope you enjoy this guide and are here to help you!

SOMMAIRE

06 PREPARING FOR YOUR ARRIVAL

Estimated budget	06
Departure checklist	07
Arranging your stay in France	08
The right to work	09
Accommodation	10
Getting to Lyon	10

11 STUDYING AT UNIVERSITÉ LUMIÈRE LYON 2

Getting to campus	11
Campus map	12
International student office	14

16 EDUCATIONAL INFORMATION

French Higher Education System - LMD (Licence-Master-Doctorat)	16
Course organization	17

18 AVAILABLE RESOURCES

Registration certificate	18
Student card (Izly)	18
Digital workspace	19

20 UNIVERSITY SERVICES

Where to eat (GSN) Guichet des Services Numériques - IT Support Center	20
Student life & association center	21
La Maison de l'étudiant.e (Student center)	22
La Mission Handicap (Disability services)	23
Social services	23
University service for Physical and Sporting Activities (SUAPS)	23
Internship Office - Pôle stages	24
University Libraries	24

26 EVERYDAY LIFE AT UNIVERSITÉ LYON 2

Getting around	26
Seeking medical treatment (University Health Service, French Health Insurance system...)	28
Useful services (Banking, Internet access, the Post Office, Useful contacts...)	31

PREPARING FOR YOUR ARRIVAL

Before you arrive in France, here is some useful information to help you prepare for your studies at Lyon 2.

ESTIMATED BUDGET

You will need a budget of around €850 a month to live comfortably.

Here is a table listing the different expenses you can expect during your stay in France.

Civil liability insurance	€25 to €30 per month
Rent (off-campus housing)	€400 to €600 per month
Tenant insurance	€50 per month
Electricity, gas, water	€30 per month
TCL Public transport pass	18-25 year olds: €32.50 per month 26-64 year olds: €65 per month + €5 for card
On-campus meals	Starting at €3.25
Groceries	€200 per month
Phone/Internet*	€20 to €40 per month

***Remember to unlock your cellphone before arriving in France to be able to insert a French SIM card and benefit from lower rates.**

DEPARTURE CHECKLIST

Ready to leave?

Remember to photocopy and scan the following documents as you may need them:



Valid passport or ID card



Valid European Health Insurance card if you are a European student



Birth certificate and translation with apostille* if necessary



Quebec students: RAMQ form



A French language diploma
(if you have one)

*WHAT IS AN APOSTILLE?

An apostille authenticates your official document as a legitimate document abroad. Nationals of the countries signatory to the Hague Convention of October 5, 1961 abolishing the requirement of legalization for foreign public documents need an apostille for some administrative formalities in France. Go to the HCCH website to find out if you are from one of the countries concerned. If so, find out how to obtain an apostille before arriving in France because it is not always possible to do so once you are in France.

ARRANGING YOUR STAY IN FRANCE

Whatever your home country, if you are from a country outside the European Economic Area, you need to obtain a French visa.

> For under-18 students

You have a visa with the mention “mineur scolarisé” (minor attending school) valid for between 6 and 12 months. No other formalities are necessary until the day you turn 18. From that day on, you have 2 months to start the process of obtaining your first residence permit.

> >For students of Algerian nationality

You should have a visa marked “carte de séjour” (residence permit). In this case, go to the International Office (DRI) as soon as you arrive to obtain the list of documents that should be presented to the Préfecture (local administrative authorities) as part of your “titre de séjour étudiant” (student residence permit) request, which must be made within 2 months of your arrival. The International Office is also authorized to pre-validate your file so that it is processed more quickly by the Préfecture.

> For students of non-Algerian nationality

- **Student visa bearing the words: *dispense temporaire de carte de séjour (no residence permit needed)***. Valid from 4 to 12 months. In this case, there are no other formalities. With this type of visa, you cannot work, obtain housing benefit or extend your stay in France.

- **Student visa bearing the words: *CESEDA R311-3 6°, also called VLS-TS***

(**Visa de Long Séjour valant Titre de Séjour = Long-stay visa, equivalent to a residence permit**).

In this case, you should complete an online application on the website <https://administration-etrangers-en-france.interieur.gouv.fr/particuliers/#/>

Once you are on the website, click on “I validate my VLT-TS”.



You should then fill in information concerning your visa, your date of arrival in France (or the Schengen area) and your address in France.

At the end of the procedure, you will have to pay a charge (€60 in 2019, subject to change). You can buy an electronic stamp online. Enter the 16 numbers of your electronic stamp in the form to validate the payment. You can also buy OFII* electronic stamps at a tobacconist's.

Once the payment has been validated, you will receive confirmation that your VLS-TS visa has been validated (“confirmation de validation de l'enregistrement de votre visa long séjour valant titre de séjour”). This confirmation replaces the “OFII stamp” which is no longer used.

* OFII : Office Français de l'Immigration et de l'Intégration (French Office of Immigration and Integration)

NB

If the visa holder wishes to travel abroad to a country in the Schengen area, their long-stay visa is sufficient to travel within the Schengen area.

If the visa holder wishes to travel outside the Schengen area or to travel to their home country, there are two possibilities:

> During the first 3 months of your arrival in France: movement is authorized without visa validation at the OFII;

> beyond 3 months: you need to obtain a certificate confirming that you have completed the OFII procedure.

GOOD TO KNOW

THE RIGHT TO WORK

Depending on your circumstances, there may be restrictions on your right to work during your studies.

IF YOU ARE NOT AN EU NATIONAL

Holding a student residence permit or a long-stay student visa equivalent to a residence permit gives you the right to any salaried activity. However, the activity must be within the annual working limit of 964 hours for non-European nationals (except Algerians).

The renewal of your residence permit depends on your commitment to your studies; absences or inadequate results due to employment may cause the Prefecture to refuse to renew your residence permit.

IF YOU ARE A EUROPEAN NATIONAL

There are no restrictions on your right to work.

IF YOU ARE ALGERIAN

Once you have your residence permit and as soon as you find work, you must obtain a provisional work permit (autorisation provisoire de travail or APT) on this website: workinfrance.beta.gouv.fr

You will be limited to 850 hours of work a year.

Warning! The Prefecture can withdraw the right of residence of a non-European student who exceeds the authorised limit.

In all cases, your university timetable takes precedence over your work schedule. Exchange students cannot be exempt from class attendance for work reasons.

For more information, go to:

<https://www.service-public.fr/particuliers/vosdroits/N107>

Job offers can be found on the university online internship and job platform, JobTeaser

<https://www.univ-lyon2.fr/formation/jobteaser>

ACCOMMODATION

If you have been allocated a room in a hall of residence, you will receive a certificate by email allowing you to move into your room. The VISALE guarantee is obligatory and you will be asked for it when you sign the lease with the CROUS (Regional Student Assistance Office).

If you have not been allocated a room in a hall of residence, we recommend that you start searching for accommodation before you arrive.
Plan for temporary accommodation if necessary.

The International Office does not reserve places for international students who are not part of an exchange program.

International students on an exchange program at Université Lumière Lyon 2 can put in a request for accommodation at a hall of residence when they apply. However, the International Office cannot guarantee they will be allotted a room.

The rental system in France may work differently from your home country. This is why we have also published an accommodation guide for international students. It contains detailed information on:

- Temporary accommodation
- Looking for accommodation
- Types of properties
- Public and private halls of residence
- Flat sharing
- Subletting
- Guarantors

Don't hesitate to use the guide!

GETTING TO LYON

By plane

The Rhônexpress:
A shuttle service linking Lyon Saint Exupéry Airport to Lyon city center in 30 minutes.

Price for a one-way ticket: €13.60 (under 25 year olds)/ €16.30 (over 25s)
€ 15.20 (online price)

www.rhonexpress.fr

By train

Lyon is accessible by train from all major European cities.
Paris is 2 hours from Lyon by train. A train ticket from Paris to Lyon costs around €70. If you are between 12 and 25 years old, you can get discounts with the youth card (Carte Jeune).
<https://www.oui.sncf/>

By bus

Lyon is also accessible by bus. A bus ticket from Paris to Lyon costs around €25. There are several budget bus companies:
<https://fr.ouibus.com/>
<https://www.flixbus.fr/>

By taxi

A trip from the airport to Lyon city center costs around €50.

Getting around Lyon

Visit <http://www.tcl.fr/>





STUDYING AT UNIVERSITÉ LUMIÈRE LYON 2

Erasmus code: FLYON 02

Our university is located at the heart of the Lyon metropolitan area, with two main campuses (Berges du Rhône and Porte des Alpes) and three external sites (Rachais, Vinatier and Écully).

The university is committed to offering a stimulating study and work environment suited to the needs of the university community.

GETTING TO CAMPUS

How do you get to the two campuses using Lyon's public transport system (TCL or Transport en Commun Lyonnais)?

Berges du Rhône campus (Lyon)

The Berges du Rhône campus consists of different buildings at various addresses: Quai Claude Bernard, Rue de l'Université and Rue Pasteur.

Access this campus by the T1 tramway, getting off at "Rue de l'Université" or "Quai Claude Bernard".

Porte des Alpes campus (Bron)

The Porte des Alpes campus in Bron is bigger than the campus in the city center, and consists of numerous buildings with the same street address: 5 avenue Pierre Mendès-France, Bron.

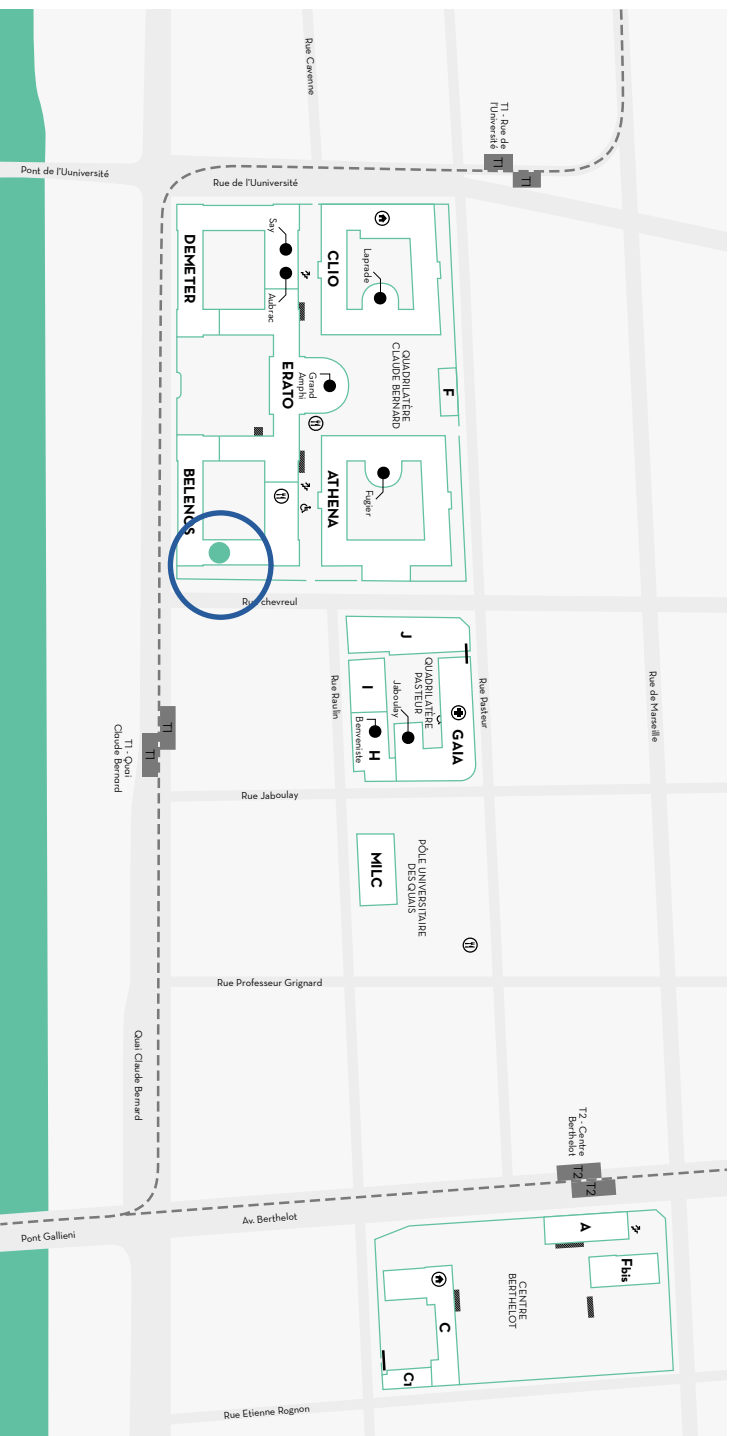
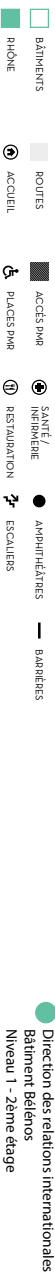
Access this campus by the T2 tramway heading for Saint Priest Bel Air or Porte des Alpes, and get off at "Parilly Université" or "Europe Université".

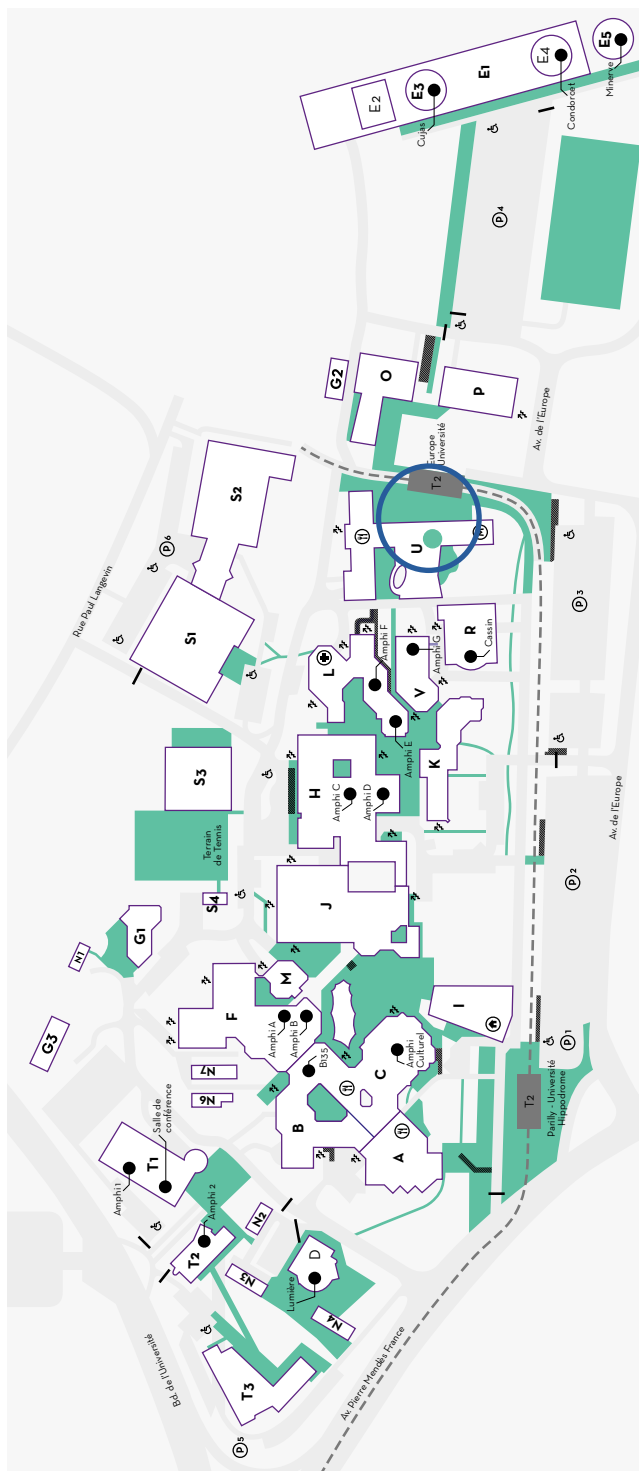
This campus is also accessible by numerous bus routes connected with the suburbs of Greater Lyon.

For more information, visit <http://www.tcl.fr/>

BERGES DU RHÔNE CAMPUS

LÉGENDES





LÉGENDES

● Direction des relations internationales
Maison de l'Étudiant
Bureau U 107

— BARRIÈRES
— ESCALIERS EXTÉRIEURS

● SANTÉ/INFERMIÈRE
● RESTAURATION

● ACCUEIL
● MISSION HANDICAP

● ACCÈS PMR
● PLACES PMR

● ROUTES
● PARKINGS

■ BÂTIMENTS
■ ESPACES DE CIRCULATION

PORTE DES ALPES CAMPUS



BUREAU des étudiant.es INTERNATIONAUX/ALES

International Student Office

L'équipe du Bureau des étudiant.es internationaux/ales vous accueille et vous accompagne dans diverses démarches liées à votre vie étudiante.

The International Student Office team welcomes and assists you with advice and information on issues affecting student life.

ACTIVITÉS
CULTURELLES

CULTURAL ACTIVITIES

INTÉGRATION
SOCIALE

SOCIAL INTEGRATION

LOGEMENT

ACCOMMODATION

VISA

RESIDENCE PERMIT

DROIT AU
TRAVAIL

RIGHT TO WORK

SANTÉ

HEALTH

LANGUE ET
MÉTHODOLOGIE
UNIVERSITAIRE
FRANÇAISE

FRENCH LANGUAGE AND
ACADEMIC METHODOLOGY

ALTER EGO

INTEGRATION PROGRAM FOR INTERNATIONAL STUDENTS

Alter Ego is a program organized by the International student Office.

Throughout the year, Alter Ego offers students the opportunity to meet other international and French students at Lyon 2 thanks to the opération binôme (a language and cultural exchange with a French student), excursions within Lyon and around France, etc.

Contact :

International student office

Porte des Alpes campus
Maison de l'Étudiant
1st floor, room U107
5 avenue Pierre Mendès-France
69500 Bron

Horaires: du lundi au vendredi de
9h00 à 17h00

Phone: + 33 (0) 4 78 69 70 42

Email: alter-ego@univ-lyon2.fr

Follow us on Facebook:
@programme.alter ego

STUDENTS WELCOME DESK

AT UNIVERSITY OF LYON

The University of Lyon, City of Lyon, Crous (Regional Student Assistance Office), Rhône Préfecture, Auvergne-Rhône-Alpes region, ONLYLYON, Campus France and 30 or so other partners have come together to welcome and accompany all students at the start of the academic year.

From September to November, the Students Welcome Desk (SWD) is a welcome center that contains all the necessary services and information to get the year off to a good start.

During your first three months at the University of Lyon, you can find out how to extend your residence permit, validate your long-stay visa, and look for housing and jobs. You can also get information on public transport, healthcare and access to treatment, culture, tourism, etc.

Be careful!

For international students, administrative procedures with the Préfecture can only be done at the SWD during this period. There will be no student desk at the Rhône Préfecture while the SWD is open.



EDUCATIONAL INFORMATION

FRENCH HIGHER EDUCATION SYSTEM - LMD (LICENCE-MASTER-DOCTORAT)

Université Lumière Lyon 2 is a public university that offers courses based on three levels:

- Licence (bachelor's degree) – 180 ECTS (3 years of study)
- Master (master's degree) – 120 ECTS (2 years of study)
- Doctorate (PhD)

All of the degrees at our university are standardised with the LMD system (Licence/Master/Doctorat), a three-level organisation of higher education that ensures mutual recognition of degrees within the European Union and favours student mobility.

Our university offers degrees in :

Arts, Letters, Languages
Law, Economics, Management
Human and Social Sciences
Science, Technology, Health

Direct-enrolment students come to Université Lumière Lyon 2 on their own initiative, outside of exchange programs and they enrol on one of the degrees offered by our university and obtain a French diploma at the end of their studies.

Exchange students at Université Lumière Lyon 2 can choose courses from any bachelor's degree and master's degree, in any faculty and department. Each course is worth 5 ECTS credits.

Depending on your status (international exchange student or direct-enrolment international students), information on the organisation of the courses, the educational pathway, how to choose your courses, grades and credits, pedagogical and administrative registration may be different.

See the educational information notices for international exchange students and direct-enrolment students on the university's French-language website: <https://www.univ-lyon2.fr/international/international-documents-utiles-2020-2021-1>

COURSE ORGANIZATION

Each academic year consists of two numbered semesters as follows:
(S = semester)

- **Licence 1 (year one of bachelor's degree):** September-January: S1.
January-June: S2
- **Licence 2 (year two of bachelor's degree):** September-January: S3.
January-June: S4
- **Licence 3 (year three of bachelor's degree):** September-January: S5.
January-June: S6
- **Master 1 (year one of master's degree):** September-January: S1.
January-June: S2
- **Master 2 (year two of master's degree):** September-January: S3.
January-June: S4

A day of classes is divided into time slots (créneaux) as follows:

- C1: 8am-9:45am
- C2: 10am-11:45am
- C3: 12 noon-1:45pm
- C4: 2pm-3:45pm
- C5: 4pm-5:45pm
- C6: 6pm-7:45pm
- C7: 8pm-9:45pm

There are two types of courses:

CM (Cours Magistraux): lectures held in lecture halls

TD (Travaux Dirigés): tutorials held in classrooms

Depending on the faculty and the class, these two types of courses may be inseparable, in which case you must take both the TD and the CM.

Remember to ask all your teachers at the beginning of the semester whether both courses are compulsory.

Université Lumière Lyon 2 is a French-language university. Therefore, the language in which the majority of courses are taught is French. In order to follow the curriculum at the university, we recommend a level of B2 or higher in French.

However, the university does not require that exchange students have a document certifying their level in French or in English.



AVAILABLE RESOURCES

Discover all the resources which the university makes available to students.

REGISTRATION CERTIFICATE

This document is important because it proves you are enrolled at the university. It will be given to you once you're officially enrolled.

STUDENT CARD (IZLY)

Your student card (also called an IZLY card) will come in useful during your stay in France. Firstly it is a form of identification, displaying your photo and student number (7 numbers).

Within the university it allows you to:

- Borrow books from the university library
- Gain access to the computer rooms
- Pay for meals at the cafeteria (Cafet'U or Resto'U) by adding funds, using it as an electronic wallet
- Make photocopies

Outside the university you can get student discounts on the city's public transport (TCL) pass, cultural events and some venues (cinemas, museums and even some fast food chains).

If your student card is lost or stolen, it will cost €10 to have a new card issued (by cheque only, payable to "Agent comptable de l'université Lumière Lyon 2").

Please indicate your family name, first name and student number on the back of the cheque. You will need to go to the GSN (IT support center) in Bron and provide proof of identity and a university registration certificate in order to obtain a new card.

DIGITAL WORKSPACE

Here is the information you need to help you use the resources on your Digital Workspace.

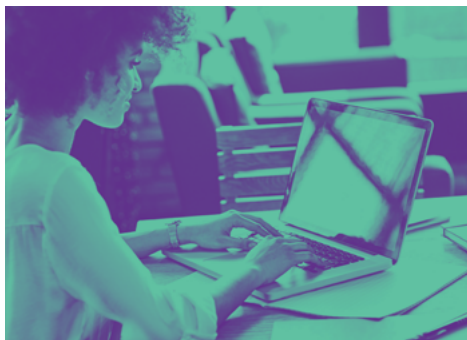
Go to <https://www.univ-lyon2.fr/campus/numerique/connexion-et-deconnexion-de-vos-services-numeriques>

Click on “Intranet” in the top left corner of the page. After being redirected, enter your username (identifiant), which is the first letter of your first name followed by the first seven letters of your family name, and your password.

You should have received your password in your personal email inbox. If not, click on “J’ai oublié mon mot de passe” (“I’ve forgotten my password”) and follow the instructions.

You can use the virtual learning platform to access the service called “**Applis**” (**Apps**), which is a resource allowing you to use various tools:

- **The Learning Platform (Moodle)**, which allows you to view teaching content uploaded by your teachers. If teachers upload course materials on Moodle, you will need to wait until your course registration has been completed before you can access them (you will receive an email from the International Office informing you of this).
- **Email**
- **Online Timetable....**



If you cannot access a course on Moodle:

- Some teachers do not upload their courses on Moodle! In this case, find out whether they upload documents onto their personal webpage.
- Failing this, contact the GSN (IT support center) stating your family name, first name and student number, and the title and code of the course in question.

UNIVERSITY SERVICES

The university provides a large number of services to help you make the most of your daily life as a student.



WHERE TO EAT

CROUS (REGIONAL STUDENT ASSISTANCE OFFICE)

The university cafeterias and restaurants offer both hot and cold meals at an affordable price.

You can pay directly with your student card (IZLY) if you have added credit, or with the IZLY app on your phone. The cost of a meal is usually around €3.30 (in 2019-2020).

More information available at www.crous-lyon.fr

ON THE PORTE DES ALPES CAMPUS (BRON)

Resto'U

(Situated in the U building, opposite the Student Center). Opening times: Monday to Friday -11:30am to 2pm. Access via the T2 tram, "Europe-Université" stop.

Cafet' Lumière

(Situated in the A Building). Opening times: Monday to Thursday - 7:30am to 5:30pm; Friday - 7:30am to 5pm. Brasserie: 11:30 am to 1:30pm. Access via the T2 tram, "Parilly Université" stop.

Café Filtre

(Situated in the U building). Opening times: Monday to Friday - 7:30am to 5:30pm. Access via the T2 tram, "Europe Université" stop.

La Coop'

(Situated in the C building). Opening times: Monday to Friday - 9:30am to 4:30pm. Access via the T2 Tram, "Parilly Université" stop.

ON THE BERGES DU RHÔNE CAMPUS

Resto'U des Quais

94 rue Pasteur, 69007 Lyon. Opening times: Monday to Friday, 11:15am to 2:15pm. Access via the T1 Tram, "Rue de l'Université" and "Quai Claude Bernard" stops - T2 Tram, "Centre Berthelot" stop.

Cafet' des Quais

(Situated on the ground floor of the domed building at the center of the University). Opening times: Monday to Friday, 8am to 6pm. Access via the T1 tram, "Quai Claude Bernard" or "Rue de l'Université" stops.

Cafétéria IEP

(*Institute of Political Science*)

14, avenue Berthelot, 69007 Lyon. Opening times: Monday to Thursday - 8:30am to 3:30pm; Friday - 8:30am to 3pm. Access via the T2 tram, "Centre Berthelot" stop.



GSN (GUICHET DES SERVICES NUMÉRIQUES) - IT SUPPORT CENTER

The IT Support Center consists of two IT rooms equipped for use by the university community during the academic year (September to June).

There you can find around twenty free-to-access computers, wireless printers (available in black and white or colour), and most importantly IT assistants to help you use the digital and online resources made available to you, such as the service "Applis" (Apps), the Learning platform, etc.

The IT Support Center can also help you scan documents (small and large formats), photo slides, and transcribe your classes or scientific articles in braille.

Lastly, under certain conditions, the IT Support Center can lend you specific resources, such as video projectors, laptops, digital recorders, digital cameras, video recorders, etc.

Opening times: Monday to Friday
7:45am - 6:45pm non-stop.

On the Porte des Alpes campus:
situated in building F - room F006.
Contact number: 04 78 77 24 15

On the Berges du Rhône campus:
situated in the basement of the domed building (Érato building) - Room E020 (next to the Cafet'U). Contact number:
04 78 69 71 04

SERVICE DE LA VIE ÉTUDIANTE (STUDENT LIFE & ASSOCIATION)

The *Service de la vie étudiante* is a pleasant area where you can socialize and meet new people. It was created at the opening of the Maison de l'Étudiant and allows you to escape from the solitude of campus life.

In the framework of community projects and thanks to the student association, students have access to resources and logistical support.

Université Lumière Lyon 2 has about fifty societies (related to courses or cultural, international, charitable or representative interests).

For more information:

<https://www.univ-lyon2.fr/campus/maison-de-l-etudiant-e-mde>

List of societies:

<https://www.univ-lyon2.fr/campus/vie-associative-1>



THE MAISON DE L'ÉTUDIANT (MDE)

The university encourages student initiatives. This is why the Maison de l'Étudiant (Student Center) offers various services to try to stimulate student curiosity and creativity, develop individual responsibility and make the campuses more lively.

The MDE is also a pleasant place to relax, meet people and engage in cultural activities.

At the MDE you will find the:

- > Mission Handicap (Disability services);
- > SESAME (services for the voluntary sector);
- > Offices of the social assistants working for CROUS (the Regional Student Assistance Office).

You will find information about:

- > The Caisse d'Allocation Familiales (CAF), that provides financial support for students and families;
- > Cultural events at the university and in Lyon;
- > Advantages that the cities have on offer (Carte Bron Campus, Pass Culture, etc.)
- > You can also consult small ads, newspapers, etc.

Specific premises can be made available to you, whether you are a volunteer from one of the university societies or undertaking a personal project:

- > 1 meeting room
- > 1 music room

- > 2 rehearsal or show rooms
- > 1 multipurpose room (a projector is available)
- > 1 exhibition hall located opposite the Maison de l'Étudiant
- > 1 dining area with microwave ovens
- > 1 relaxation room

Address :

Porte des Alpes Campus

U Building

5 avenue Pierre Mendès-France

69500 Bron

Email: accueil-mde@univ-lyon2.fr

Tel : + 33 (0) 4 78 77 43 83

LA MISSION HANDICAP (DISABILITY SERVICES)

It is located at the Maison de l'Étudiant. Students with a disability should get in touch with the team before their arrival so they can prepare and welcome students under the best conditions.

Email : mission.handicap@univ-lyon2.fr

SOCIAL SERVICES

The social workers at the Maison de l'Étudiant are there to improve the living and working conditions of students.

Students from Université Lumière Lyon 2 may meet with a social worker from the CROUS or the University, by appointment only.

Appointments are allocated according to the slots available and, if possible, the student's campus.

Email: ssocial@crous-lyon.fr

For more information, visit: <https://welcome.univ-lyon2.fr/health-centre/social-financial-difficulties-meeting-a-social-worker>

UNIVERSITY SERVICE FOR PHYSICAL AND SPORTING ACTIVITIES (SUAPS)

Université Lumière Lyon 2 offers numerous sporting activities through the University Service for Physical and Sporting Activities (SUAPS).

With SUAPS you can take part in nearly 40 sporting activities on the university's own premises on both campuses and in other sites located elsewhere.

The activities are supervised by more than 70 instructors and leaders. Some sports activities are graded, allowing you to obtain credits. You can also choose an ungraded sports class.

For more information go to: <https://welcome.univ-lyon2.fr/sports>



INTERNSHIP OFFICE (PÔLE STAGES ET INSERTION)

The Internship Office acts as a link between your studies and the world of work. An internship is a period of training within a company. You can do one during your mobility period. The Internship Office is there to support you in your search for an internship.

For more information go to <https://welcome.univ-lyon2.fr/internships-and-employment>

Reception of students and interviews by appointment: <https://www.univ-lyon2.fr/stages-emplois/prise-de-rendez-vous-avec-le-pole-stages-insertion>

Porte des Alpes Campus – Building F 9am-12pm and 2pm-5pm (except Wednesday afternoon and Friday) .

Berges du Rhône Campus – Building C Tuesday, Wednesday, Friday 1:30pm-4:30pm

Career advice interviews by appointment only from 9am to 12pm and 2pm to 5pm (except Wednesday afternoon).

Exchange students: please note that if the internship is a compulsory part of your course, your home university must provide you with an internship agreement and issue the corresponding credits.

UNIVERSITY LIBRARIES

The libraries are ideal for students who are keen to do well during their university year. The two main libraries are located on the Porte des Alpes and the Berges du Rhône campuses. The collections are sorted based on the area of studies. The libraries offer different services:

> **Loans:** You can borrow up to 20 documents per week in each library. You also have access to some special publications and rare books.

> **Study rooms:** For group work, remember to reserve a study room at the information desk. This service is accessible to all.

> **Photocopies:** You can photocopy the documents of your choice with your IZLY card, using the photocopiers located on the ground floor of each library. You can also scan documents and have them emailed to you.

> **Internet:** Wi-Fi is available in each library and you can also use the electric and network sockets. Cables are not provided. In the Chevreul library there are 150 open-access Macintosh computers. The Bron library has 41 computers with access to the catalogue, databases, the library's web pages, the "Applis" service and the online learning platform.

CHEVREUL LIBRARY

Covering 6,000m², it offers 570 subscriptions to publications and 155,000 works in the following subjects: literature, languages, sociology, anthropology, philosophy, performing arts, law, economic and social administration, psychology, education, history, geography, and tourism.

It is the reference library in Lyon for economic and social sciences, political science, art history and archaeology.

Location :

Berges du Rhône Campus
10, rue Chevreul 69007 Lyon
Tel : +33 (0)4 78 69 77 32

Go to <https://bu.univ-lyon2.fr/bu-chevreul> to see the opening hours

BRON LIBRARY

The university library in Bron, which covers 8,000m², offers 802 subscriptions to publications and 250,000 works in the following subjects: law, economics, management, political science, sociology, education, French language and literature, classical literature, musicology, history of the arts and archaeology. It is the reference library in Lyon for psychology, anthropology and sociology.

Location :

Porte des Alpes Campus
5, avenue Pierre Mendès France
69500 Bron, J Building
Tel : +33 (0)4 78 77 24 87

Go to <https://bu.univ-lyon2.fr/bu-de-bron> to see the opening hours

ELECTRONIC LIBRARY

The Documentation Service (SCD) of the university provides students, teachers and teacher-researchers with electronic resources (learning tools, press, e-books).

To see the catalogue go to:

<https://bu.univ-lyon2.fr/bibelec>





EVERYDAY LIFE AT UNIVERSITÉ LYON 2

GETTING AROUND



In Lyon

Lyon's public transport network (TCL)

"TCL" is the name of the company that runs metros, buses and trams in Lyon and its metropolitan area.

<http://www.tcl.fr/>

The network operates from around 5am to midnight.

You can purchase your ticket in one of the many agencies (closed on Sundays and public holidays), from the ticket machines located at stops and stations, from bus drivers (however tickets purchased on board are more expensive) and in certain tobacconists. Your ticket or card must be validated every time you board a vehicle. Tickets are valid for 1 hour and it is possible to take a metro, tram and bus as part of the same journey.

Prices:

- Single ticket : €1.90 or €17.60 for a set of 10 tickets (reduced to €15.10 for students under 27)
- Monthly subscription ("Campus mensuel"): €32.50 a month (for students under 25)
- Yearly subscription ("Campus annuel"): €318 (for students under 28)
- Monthly subscription: €65 a month for over 27s.

To obtain your card, you need to go to a TCL agency with the following documents:

- > student card or registration certificate;
- > proof of address;
- > proof of identity;
- > passport photo;
- > 5 euros to purchase a Técély card.

Night routes

To get home safely at night, there are night bus routes known as “Pleine lune” which run from September to June. There are multiple departures per evening on Fridays and Saturdays between 1am and 5am, including public holidays.

For more information, go to “pleine lune” <https://www.tcl.fr/services/pleine-lune-les-lignes-de-nuit>

Vélo’v

Vélo’v bikes are available everywhere in Lyon to make travelling easier. You can pick up a Vélo’v at one dock and drop it off at another location. This means of travel is convenient, easy to use, economical, and also environmentally friendly.

There are several basic tariff plans to access it:

- > Annual subscription: €31 (€16.50 for under 25s). If you load your subscription on your TCL card, you can benefit from 45 free minutes instead of half an hour.

- > 1 day ticket at €4

- > 1-hour ticket at €1.80

These plans allow you to use Vélo’v for free for the first 30 minutes. Beyond this period, there is a charge per hour (between €0.50 and €2 per hour depending on the tariff plan chosen).

WARNING! €150 must be in your account to register for a tariff plan: it will not be deducted but serves as a deposit in the event of damage.

For more information, go to www.velov.grandlyon.com

Electric scooters

Rental via smartphone app. Various service providers. About €0.15 per minute.

In France

Trains in France /SNCF

The SNCF is the Société Nationale des Chemins de Fer, i.e. the company that runs the trains.

There is a very reasonably-priced subscription for people under 27 years old known as the “Carte jeune” (youth card), which offers discounts (especially on high-speed TGV trains, with a guaranteed 30% discount). The subscription costs €50 per year. There is also the “Prem’s” plan which allows you to book train tickets many months in advance at very low rates; however, these tickets are neither exchangeable nor refundable.

For more information, go to <https://www.oui.sncf/>

Car sharing

Car sharing is an economical way to travel in France allowing you, as a driver or passenger, to share a journey and split the cost.

Several sites offer ride sharing services including www.blablacar.fr

Intercity buses

“Les Cars du Rhône” serve several destinations near Lyon.

www.carsdurhone.fr

Plane

Lyon Saint-Exupéry Airport offers numerous routes to French cities and international destinations.

www.lyonaeroports.com



SEEKING MEDICAL TREATMENT

UNIVERSITY HEALTH SERVICE (SSU)

The SSU at Université Lumière Lyon 2 is tasked with preventive healthcare and health promotion for students.

It offers the following services by appointment only (on the Porte des Alpes Campus):

- general medicine and preventive health assessments
- gynaecological consultations,
- contraception and STI screening
- free psychological and dietary consultations
- blood tests, medical samples
- a nursing service (no appointment necessary)

Do not hesitate to make an appointment by email from Monday to Friday from 8:30am to 5:30pm.

How to make an appointment?

By email: ssu@univ-lyon2.fr

Address :

Porte des Alpes Campus - L building
5 avenue Pierre Mendès-France
69676 Bron cedex
Tramway T2 - Europe-Université stop

Contact:

Tel: 04 78 77 43 10

Email: ssu@univ-lyon2.fr

Consulting a doctor

If you need to see a general practitioner, a dentist or a specialist, you can ask for contact details from the health department at Université Lumière Lyon 2, from a pharmacist, or search on the health insurance website: <http://annuaire.sante.ameli.fr/>

How much does a doctor's appointment cost?

At the University Health service, general medicine and preventive health assessments, psychological and dietary consultations and nursing services are free of charge.

For general medicine and gynaecology consultations, you should present your "carte vitale" (health services card), which means that the consultation will cost you €7.50, which the health insurance company will then reimburse!

> general practitioners, dentists, eye doctors, gynaecologists or psychiatrists (for under-26s): €25 or more per consultation.

It is possible to consult doctors' fees on the health insurance website: www.ameli.fr/

Health insurance

French health insurance system

When you arrive in France and after you register at the university, you should take the necessary steps to join the French health insurance scheme (sécurité sociale).

This procedure is compulsory and free of charge (if you have a European Health Insurance Card, this procedure does not concern you).

You will be asked for a registration certificate from your university in order to register online:

<https://etudiant-etranger.ameli.fr/#/>

Be careful, depending on your situation, the registration process may be different:

> For European nationals (as well as Lichtenstein, Norway and Switzerland) and students from Quebec, you remain affiliated to the health insurance system in your country and are not required to join the French health insurance scheme. Remember to bring your European Health Insurance Card with you if you are European and your RAMQ form if you are from Quebec.

> For non European students, you must join the French health insurance scheme. Go to this website: <https://etudiant-etranger.ameli.fr/#/>

> Students from Québec must request a certificate of affiliation to the Québec health insurance system before your departure (RAMQ certification). When you arrive in France you must take the certificate to the French health insurance office (CPAM).

For more information, contact the French health insurance office (CPAM or Caisse Primaire d'Assurance Maladie)

International Relations Department
276 Cours Émile Zola

69100 Villeurbanne

Phone : 3646 (€ 0.30 per minute)

A registered doctor

In order to see a doctor, you need to:

- Declare who your registered doctor is. This is a general practitioner who is certified by the French state health insurance system (a list of certified doctors can be found on their website). Ask your doctor to fill in a form stating that he/she is your registered doctor during your first visit, and then pass it on to your French health insurance provider.
- Show the doctor proof of health cover (a certificate of affiliation to a health insurance provider or your European Health Insurance card).
- Pay the consultation fee.
- Send a copy of your registered doctor's statement, the "feuille de soins" (summary of treatment) and a copy of any prescriptions to your health insurance provider. You will receive details of the reimbursement from your health insurance provider.
- Send the details of the reimbursement to your complementary health insurance provider if you have one (see below).

Important: For maximum reimbursement by the health insurance system you need to register with a doctor. If you need to see a specialist (a doctor specialized in a particular field) you should preferably consult your registered doctor first. He/she will provide you with a referral note, allowing you to be reimbursed by the health insurance system. There are some exceptions to this: you do not need to see a registered doctor before seeing an eye doctor, a dentist, a gynecologist or, if you are under the age of 26, a psychiatrist.

Mutuelle (complementary health insurance)

If you are registered with a complementary health insurance provider, it will “top up” the amount reimbursed by French state health insurance for medical and accident-related expenses. For example, state health insurance will reimburse 70% of fees for consultations on the basis of €25. There is a charge of €1 for the patient but complementary health insurance will cover the rest.

Complementary health insurance is not compulsory but is strongly advised. The price varies depending on your age and which provider you choose.

Where and when can I sign up for complementary health insurance?

You can enquire about complementary health insurance in your home country or, if you wish, you can sign up with a student insurance provider in France.

GOOD TO KNOW

Université Lumière Lyon 2 welcomes students with disabilities (physical, sensory, mental, cognitive or psychological difficulties).

Support can be provided by Université Lumière Lyon 2 for students in need of support on campus or during class. In order to anticipate the arrival of a student with a disability, we ask students to specify this when applying. However, students are not obliged to do so and can, if they wish, arrange support themselves.

To help us meet your needs, you must first make an appointment with the University Health Service (“Service de Santé Universitaire”), then contact the “Mission Handicap” (Disability services).

University Health Service (Service de Santé Universitaire or SSU)
Campus Porte des Alpes (L building)
04 78 77 43 10
ssu@univ-lyon2.fr

Disability Services (Mission handicap)
Campus Porte des Alpes
Maison de l'Étudiant.e (U building)
04 78 77 31 05
mission.handicap@univ-lyon2.fr

USEFUL SERVICES

Banking

You can exchange money at the currency exchange booths in the airport, near the Part Dieu shopping center, and on Rue de la République in the center of Lyon. You can find the exchange rate for your currency on <http://www.xe.com/fr/>.

You should consider opening a bank account in Lyon as this will help you to obtain financial aid for housing from CAF (Caisse d'Allocations Familiales), your residence permit, and in paying your bills, etc. You should also ask your current bank about any partnerships they may already have with banks in France.

Generally, it is free to open a bank account, and many banks will offer free bank cards and checkbooks for the first year.

To open an account, you must provide the following documents:

- > Proof of identity (e.g. your passport);
- > Proof of address in France (receipt of rent payment, gas bill, etc.);
- > Student card or registration certificate for any student discounts;
- > Residence permit or visa.

Banks have restricted opening hours (generally 9am to 4pm). Many are closed on Mondays; however, you can find many cash machines (ATMs), including one on the Porte des Alpes campus.

You can also transfer money using:

www.westernunion.fr
www.moneygram.com
www.paypal.com

Internet access

WiFi at the university

You can connect to the WiFi network at the university with your own computer, using the same username (identifiant) and password that you use to connect to the "Applis" (or Apps) of your Lyon 2 student account.

Computer rooms

There are many computer rooms at the university. To access them, simply present your student card. There are also computers with internet access in the libraries to help with academic work.

Other places with WiFi

There are many places with WiFi in Lyon (along the quayside or Berges du Rhône, Part Dieu shopping center, some bars, etc.).

Internet cafes

These locations offer an internet connection for a flat-rate fee.

Internet providers

If you would like to sign up for an internet plan where you live, there are different providers that offer internet, TV, and phone bundles for about 30 euros a month. You should read their subscription conditions for details.

If you live in a hall of residence, internet connection will be provided.

The Post Office

The post office is generally open to the public until 6pm on weekdays and on Saturday mornings. Do not hesitate to check with them as there are many ways to send packages.

Phone services

You can also get information from phone providers (Free, SFR, Bouygues, Orange, Virgin, etc.) about their best student plans:

- > traditional plans with monthly payments. Make sure you understand their terms for ending the contract (contracts without a long-term commitment/ contract with a commitment of 12 or 24 months);
- > pre-paid cards without a fixed duration
- > Text cards for sending text messages at a reduced cost.

Calling abroad

You can use Skype or Duo via the internet with a pre-paid card or from a phone shop (e.g. in the Guillotière neighbourhood).

Photocopies / COREP

You can make photocopies in the open-access computer rooms, in the libraries, or in COREP stores which offer competitive rates. The staff at COREP can also help you bind files and essays.

For more info: www.corep.fr

Useful contacts

Emergency contacts (free to call)

- > Emergency medical services or SAMU (Service d'aide médicale urgente): 15
- > Police: 17
- > Firefighters: 18
- > European emergency number: 112

Health

- > Poison control: 15 or 04 72 11 69 11
- > Saint Luc Saint Joseph Hospital: 08 26 28 81 81
- > Édouard Herriot Hospital: 08 25 08 25 69
- > University Health Service (SSU): 04 78 77 43 10 or 04 78 77 43 24
- > Family planning: 04 78 89 50 61 or 08 10 81 07 14
- > AIDS information services: 08 00 84 08 00 (24h a day, free to call)
- > Drugs information services: 08 00 23 13 13 (24h a day, free to call)
- > Victim support: 08 842 846 37 (normal cost of a local call)

Security

- > Police station: 04 78 78 40 40
- > Lyon 2 Security services: 04 78 69 76 99 (Berges du Rhône campus) or 04 78 77 23 23 (Porte des Alpes campus)

Miscellaneous

The Greater Lyon authorities:
04 78 63 40 40
Tourist Information Center:
04 72 77 69 69

Consulates

There are about 20 consulates in Lyon:
www.lyon.fr > research > consulates

TRANSLATORS

*Angélique Barry, Olga Bykova, Henrik Edvardsson,
Eilis Moloney McDonnell, Anna Pienaar, Teodora Ristic,
Cameron Scalera, Katherine Sheppard, Callum Smith,
David Thompson, Annalise Thornton, Connor Tweed, Katie
Worden, Alura Zhang*

TRANSLATION COORDINATOR

Malcolm Harvey

CRÉATION

*Direction des Relations Internationales
Direction de la Communication Université Lumière Lyon 2*

© CRÉDITS IMAGES

*Brooke Cagle / Priscilla du Preez / G-stockstudio /
Jacoblund / Radu Marcusu / Becca Tapert / Jake Ingle /
Direction de la communication Lyon 2*



UNIVERSITÉ LUMIÈRE LYON 2

International student office (Bureau des étudiant.es internationaux/ales)

Porte des Alpes Campus - Maison de l'étudiant.e - room U107

Berges du Rhône Campus - Bélénos Building 1st floor rooms B140 & B142